

DIMENSION NOTE:
Proposed building dimensions shown hereon are of the exterior.

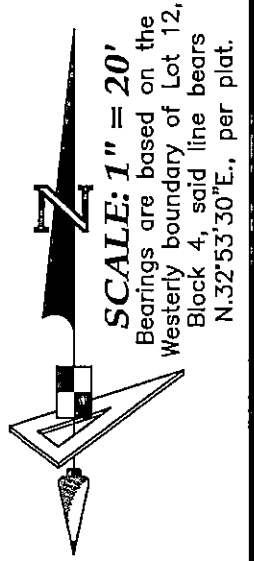
Plot Plan

GENERAL NOTES:
Residence Footprint = 2,949± Square Feet
As per the plans furnished by the builder.

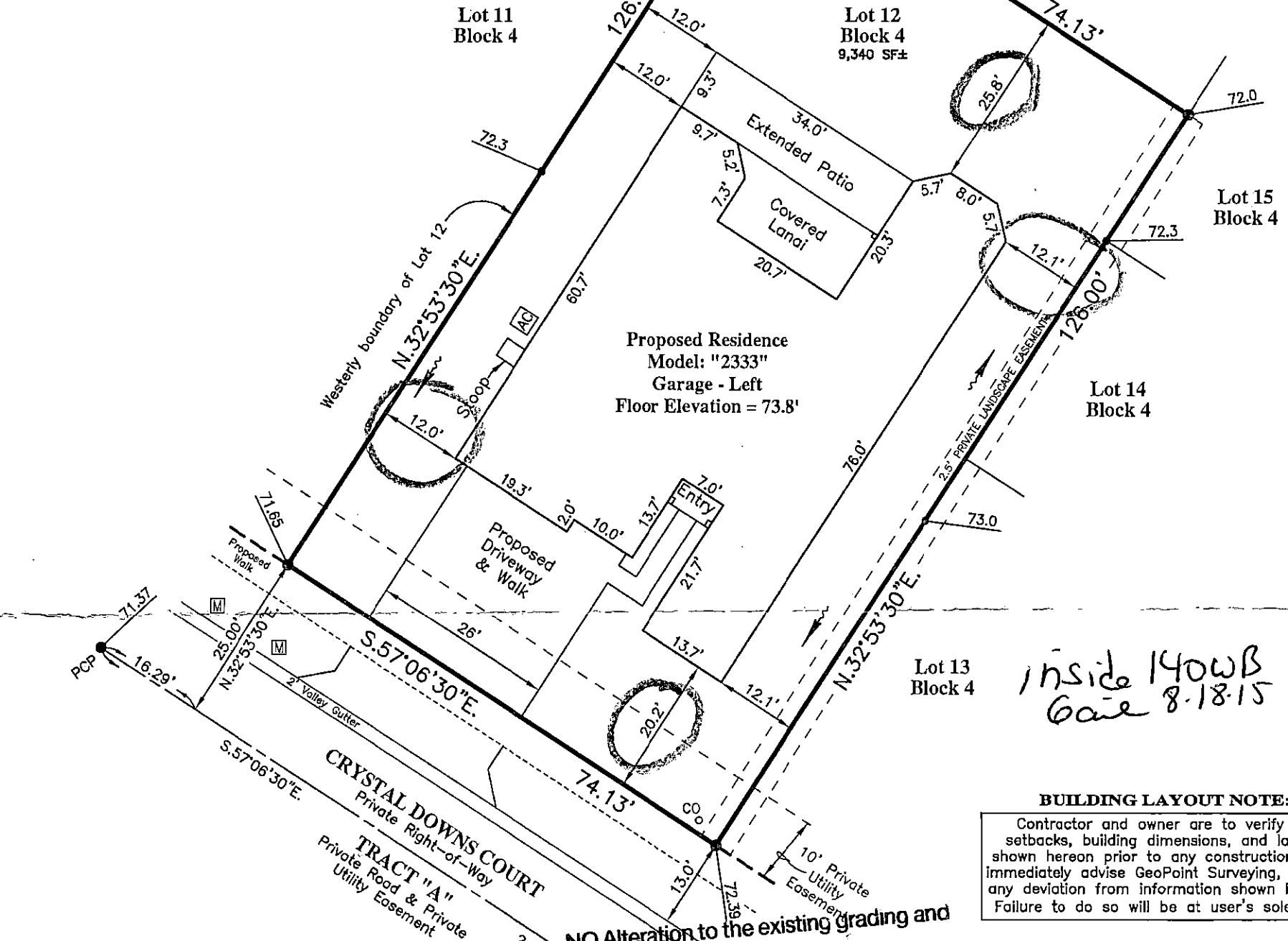
SUN CITY CENTER UNIT 274 - 275
PLAT BOOK 123, PAGES 82-93

Setbacks: (Reported)
20ft. from all edge of pavement
15ft. minimum distance between buildings
20ft. from front of unit to all boundaries
15ft. from rear of unit to all boundaries
7.5ft. from side of unit to all boundaries
(5.0ft. from side of unit to all boundaries for single family homes)
Max Building Height = 35'
Approval for new construction as indicated

These plans are not reviewed for zoning conditions, contractor shall be responsible for all conditions noted.



On this plan only; this does not constitute Approval for any non-conformities or lot Reconfigurations, past, present, or future



*inside 140WB
Gate 8-18-15*

BUILDING LAYOUT NOTE:
Contractor and owner are to verify all setbacks, building dimensions, and layout shown hereon prior to any construction, and immediately advise GeoPoint Surveying, Inc. of any deviation from information shown hereon. Failure to do so will be at user's sole risk.

All construction must take place according to approved site plan. No construction is

NO Alteration to the existing grading and drainage pattern and no additional fill beyond the limits of construction may occur unless shown in an approved grading plan

SOD AND CONCRETE CALCS		
Combined Total Lot Area in Square Feet ±	Total Sod Area in Square Feet ± (Includes right-of-way area between front property line and back of curb)	Total Conc. Area in Square Feet ± (Includes Sidewalks and Driveway ONLY)
9,340	5,021	761

SEE DRAINAGE PLAN FOR GRADING AND ELEVATIONS

LEGEND:

Pg. - Page	R/W - Right Of Way	O.R. - Official Record	P.B. - Plat Book	Elev. - Elevation	SF - Square Feet	Conc. - Concrete	BP - Brick Paver	SW - Sidewalk	CI - Curb Inlet	GTI - Grate Top Inlet	MES - Mitered End Section	RCP - Reinforced Conc. Pipe	PVC - Polyvinyl Chloride	P.K. - Parker Kalon Nail	SIR - Set 5/8" Iron Rod LB7768	SPKD - Set P.K. & Disk LB7768	FIR - Found 5/8" Iron Rod	LB148 (Unless Noted Otherwise)	FIP - Found 1/2" Iron Pipe	LB148 (Unless Noted Otherwise)	FPK - Found P.K. Nail	FPKD - Found P.K. Nail & Disk	FCM - Found Concrete Monument	REF - Reference	PRM - Permanent REF. Monument	PCP - Permanent Control Point	P.D.U.E. - Private Drainage Utility Easement (Note: Some items in above legend may not be applicable)	L.B. - Licensed Business	ST - Storm Sewer	WV - Water Valve	RCM - Reclaimed Water Meter	RCWV - Reclaimed Water Valve	TEB - Telephone Box	EB - Electric Box	CTB - Cable Television Box	LP - Light Pole	SSM - Storm Sewer Manhole	SHM - Sanitary Sewer Manhole	EH - Electric Handhole	COO - Clean Out	ICV - Irrigation Control Valve	Sign	AC - Air Conditioner	P.U.E. - Public Utility Easement	P.D.E. - Private Drainage Easement	D.E. - Drainage Easement	L.M.E. - Lake Maintenance Easement	YD - Yard Drain	AE - Access Easement	L.B.E. - Landscape Buffer Easement	R.W.E. - Raw Water Well Easement	OWS - Water Service	DFD - Drainage Flow Direction	10.0 - Proposed Design Grade	10.2 - As-Built/Existing Grade
------------	--------------------	------------------------	------------------	-------------------	------------------	------------------	------------------	---------------	-----------------	-----------------------	---------------------------	-----------------------------	--------------------------	--------------------------	--------------------------------	-------------------------------	---------------------------	--------------------------------	----------------------------	--------------------------------	-----------------------	-------------------------------	-------------------------------	-----------------	-------------------------------	-------------------------------	---	--------------------------	------------------	------------------	-----------------------------	------------------------------	---------------------	-------------------	----------------------------	-----------------	---------------------------	------------------------------	------------------------	-----------------	--------------------------------	------	----------------------	----------------------------------	------------------------------------	--------------------------	------------------------------------	-----------------	----------------------	------------------------------------	----------------------------------	---------------------	-------------------------------	------------------------------	--------------------------------

SURVEYOR'S NOTES:

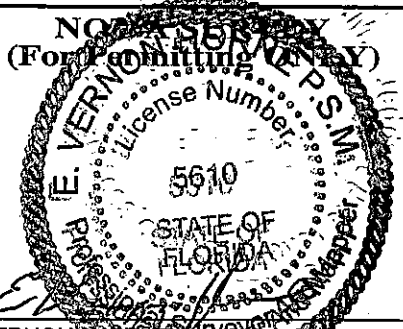
- Current title information on the subject property had not been furnished to GeoPoint Surveying, Inc. at the time of this plot plan.
- Roads, walks, and other similar items shown hereon were taken from engineering plans and are subject to survey.
- Elevations shown hereon are in feet and are referenced to the National Geodetic Vertical Datum of 1929 (NGVD29).
- Proposed grades & finished floor elevations shown hereon are from the SUN CITY CENTER UNIT 274 - 275 Grading & Drainage Plan, provided by HEIDT DESIGN.
- This Plot Plan is subject to matters shown on the Plat of SUN CITY CENTER UNIT 274 - 275.

PREPARED FOR:
MINTO COMMUNITIES, LLC

FLOOD ZONE:
The property shown hereon is on the Federal Emergency Management Agency's Flood Insurance Rate Map Panel Number 12057C0678H dated 08/28/08, and appears to lie in Zone "X".

DESCRIPTION: Lot 12, Block 4, SUN CITY CENTER UNIT 274 - 275, as recorded in Plat Book 123, Pages 82 through 93 inclusive, in the Public Records of Hillsborough County, Florida.

1403 E. 5th Avenue
Tampa, Florida 33605
Phone: (813) 248-8888
Fax: (813) 248-2266
Licensed Business No. LB7768



GeoPoint Surveying, Inc.

REVISIONS

Description	Date	Dwn.	CK'd	P.C.	Order No.	Field Book

E. VERNON MORRIS
FLORIDA PROFESSIONAL SURVEYOR LICENSE NO. LS5610

Drawn: SF	Checked: DJW	P.C.: ~	Data File: ~
Date: 07/30/15	Dwg: 12_Block 4_PP.dwg	Order No.: ~	
SEC. 18 - TWN. 32 S. - RNG. 20 E.		Field Bk: ~	